



# **CAPACITY & CAPACITY L.**

Technical data and equipment at  
a glance.

Mercedes-Benz  
The standard for buses.



# THE CAPACITY AND CAPACITY L AT A GLANCE.

CapaCity



Length [mm]:	19.725	Height [mm]:	3.095
Turning circle [mm]:	22.926	Width [mm]:	2.550

CapaCity L



Length [mm]:	20.995	Height [mm]:	3.095
Turning circle [mm]:	24.466	Width [mm]:	2.550

# TECHNICAL DATA AND EQUIPMENT AT A GLANCE.

	CapaCity	CapaCity L
<b>Transport capacity</b>		
Number of seats – Standard seating	44	44
Passenger capacity max.	181	199
Seating type City Star Eco (CSE)	●	●
Seating type City Star Function (CSF)	○	○
Seating type Inter Star Eco (ISE)	○	○
Driver's seat GRAMMER Linea MSG 90.6 P, air-sprung	●	●
Driver's seat ISRI 6860, integrated pneumatic system, 3-point seat belt	○	○
Wheelchair space	○	○

	CapaCity	CapaCity L
Dimensions		
Length [mm]	19.725	20.995
Width [mm]	2.550	2.550
Width incl. mirrors [mm]	2.950	2.950
Height [mm]	3.095	3.095
Height incl. air-conditioning system [mm]	3.120	3.120
Height incl. optional equipment	3.350	3.350
Height incl. rear roof fans [mm]	3.095	3.095
Inner stand height [mm]	2.313	2.313
Parapet height (above ground) [mm]	952	952
Wheelbase front axle-central axle [mm]	5.900	5.900
Wheelbase central axle-drive axle [mm]	5.990	7.260
Wheelbase drive axle - trailing axle [mm]	1.600	1.600
Tyre size	275/70 R 22,5	275/70 R 22,5
Overhang at front [mm]	2.805	2.805
Overhang at rear [mm]	3.430	3.430
Turning circle [mm]	22.926	24.466
Turning circle BOKraft [mm]	25.000	25.000
Ring width turning circles min. [mm]	7.479	7.095
Ring width BOKraft [mm]	6.769	6.928
Ring width max. permissible according to BOKraft [mm]	7.200	7.200
Track circle minimal [mm]	19.109	20.901
Wheel impact front axle max. [°]	53	53
Cockpit height [mm]	310	310
Usable volume / capacity AdBlue [l]	27/32	27/32

Capacity fuel tank left / right [l]	150 / 150	150/150
Floor height over roadway [mm]	370	370
Pedestal height [mm]	310	310
Entry height door 1 [mm]	320	320
Entry height door 2 [mm]	320	320
Entry height door 3 [mm]	320	320
Entry height door 4 [mm]	320	320
Clear door width 1 [mm]	1.250	1.250
Clear door width 2 [mm]	1.250	1.250
Clear door width 3 [mm]	1.250	1.250
Clear door width 4 [mm]	1.250	1.250
Slope angle in front [°]	7	7
Slope angle rear [°]	7	7

		CapaCity	CapaCity L
Transmission			
Engine		Mercedes-Benz OM 470	Mercedes-Benz OM 470
Engine 2*		Mercedes-Benz OM 470	Mercedes-Benz OM 470
Engine type		6-cylinder in-line-engine	6-cylinder in-line-engine
Output [kW]		265	265
Output 2* [kW]		290	290
Max. torque [Nm]		1.700	1.700
Max. torque 2* [Nm]		1.900	1.900
At speed [1/min]		1.100	1.100
At speed 2* [1/min]		1.100	1.100
Displacement [l]		10,7	10,7
Displacement 2* [l]		10,7	10,7
EU emissions standard		Euro VI	Euro VI
Transmission		Voith Diwa.6	Voith Diwa.6
Transmission 2*		ZF-Ecolife	ZF Ecolife

	CapaCity	CapaCity L
<b>Chassis</b>		
Steering	Power steering	Power steering
Front axle, type	ZF RL 82 EC	ZF RL 82 EC
Centre axle, type	ZF AVN 133	ZF AVN 133
Driven axle, type	ZF AV 133	ZF AV 133
Trailing axle, type	ZF RL 82 EC	ZF RL 82 EC
Front axle: independent suspension, anti-roll bar	●	●
Drive axle: with anti-roll bar	●	●
Trailing axle: active steering, independent suspension	●	●
Kneeling	○	○
Articulation Turntable Controller (ATC)	●	●
Air suspension via electronic level control system (ENR)	●	●
Rough road running gear	○	○
<b>Brakes</b>		
Pneumatic disc brakes on all axles	●	●
Electronically controlled braking system (EBS)	●	●
Anti-blocking system (ABS)	●	●
Brake Assist (BAS)	●	●
Acceleration Slip Regulation (ASR)	○	○
Retarder	○	○
Automatic bus stop brake with pull-away lock	●	●
Parking brake	●	●

	CapaCity	CapaCity L
<b>Safety and driver assistance systems</b>		
Rollover strength compliant with in ECE R29	●	●
Tire Pressure Monitoring (TPM)	●	●
Preventive Brake Assist 2	○	○
Front Collision Guard (FCG)	-	-
Sideguard Assist 2	●	●
Reversing camera	●	●
Reversing buzzer	○	○
Extinguishing system	●	●
Rain-light sensor	○	○
Flat wiper blades with water fed through wiper blade	●	●
Rollover strength compliant with ECE-R 66.02	●	●
270° Kamera	○	○
Traffic Sign Assist	●	●
Frontguard Assist	●	●
Attention Assist (AtAs)	●	●
MirrorCam	○	○

	CapaCity	CapaCity L
<b>Weight and fuel tanks</b>		
Capacity of fuel tank [l]	300	300
AdBlue® additive tank [l]	32	32
Gross vehicle weight [kg]	32.000	32.000
Axle loads, max. permissible front axle [kg]	7.500	7.500
Axle loads, max. permissible central axis [kg]	10.000	10.000
Axle loads, max. permissible drive axle [kg]	13.000	13.000
Permissible weight trailing axle [kg]	6.930	6.930
<b>Heating, air conditioning and ventilation</b>		
Heater with convectors at side walls	○	○
Driver's area air conditioning	○	○
EvoCool Basic	○	○
Turbo roof ventilator	●	●
Roof-mounted air-conditioning system with heat pump	○	○
Electric roof air conditioning (modular system)	○	○
Electric roof air conditioning system (modular system) for the driver's workstation	○	○
Refrigerant filling capacity [lbs/kg]	0 - 16	0 - 16
CO <sub>2</sub> equivalent [lbs/t]	0 - 22,88	0 - 22,88

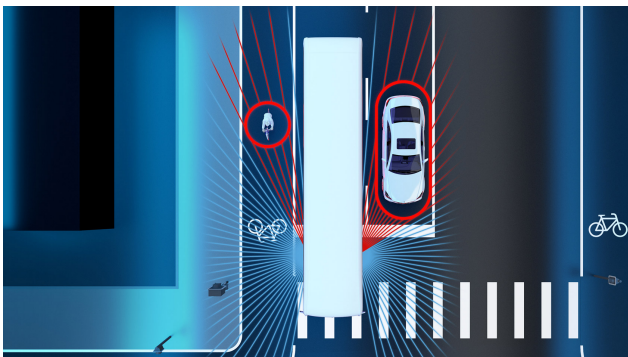
	CapaCity	CapaCity L
<b>Doors and glazing</b>		
Number of doors	4	4
Interior swivel door	●	●
Sliding swivel door	○	○
Ramp manual	○	○
Ramp electric	○	○
Single glazed	●	●
Double glazed	○	○
Windscreen heatable	○	○
<b>Profitability</b>		
Tire Pressure Monitoring (TPM)	●	●
<b>Lighting</b>		
Low beam	●	●
High beam	●	●
Daytime driving lights with LED technology	○	○
Daytime driving lights with halogen	●	●
Headlamps with LED technology	○	○
Headlamps Bi-Xenon incl. cleaning system	○	○
Front fog lamp	○	○
Cornering light	○	○

● Standard equipment ○ Optional equipment

\* Optional equipment

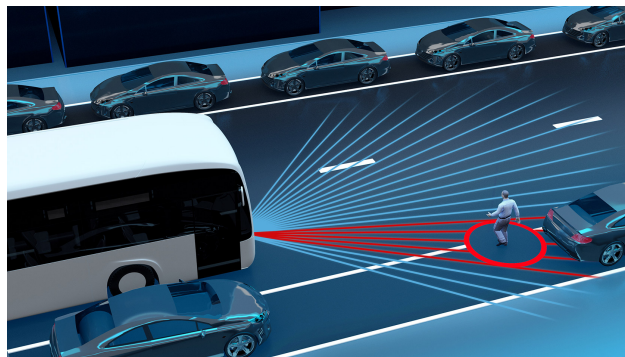
# SAFETY.

## Sideguard Assist 2



Sideguard Assist 2 is a safety assistance system that supports the driver in critical situations when turning right or turning left when visibility is possibly restricted. The system is designed to help detect moving obstacles within the system limits, and warns the driver so as to avoid critical situations or reduce the consequences of accidents when turning off or changing lanes.

## Preventive Brake Assist 2



With Preventive Brake Assist 2, Daimler Buses offers the second generation of Active Brake Assist. The system warns of collisions with moving pedestrians and cyclists as well as stationary and moving objects. In the event of a serious risk of collision, the driver is alerted by a visual and acoustic warning and partial braking is initiated automatically.

## Tyre Pressure Monitoring (TPM)

The wireless tyre pressure monitoring with indication in the multifunctional display is an electronic safety system that permanently monitors the air pressure of all tyres. Tyre pressure losses are displayed within the system limits.

The right tyre pressure contributes to driving safety and significantly reduced fuel consumption. Even a tyre pressure set 0.5 bar too low can increase fuel consumption by up to 5%. The wheel electronics are positioned on the valve on the inside of the rim. The sensors record the data relevant to the tyre pressure and transmit it to the display instrument.

## MirrorCam

The modern MirrorCam system provides a clear and full view of the road traffic. Equipped with high-resolution cameras, the driving safety is improved and the risk of accidents is minimised. The extended field of vision enables the driver to see pedestrians, cyclists and other road users in the surrounding area. This eliminates the blind spot when turning right.

## Traffic Sign Assist (TSA)

The innovative Traffic Sign Assist offers maximum safety and comfort on the road. Thanks to GPS and camera support, the vehicle speed is constantly compared with the current traffic regulations.

## Frontguard Assist

Frontguard Assist is an advanced system that was specially developed to warn drivers of pedestrians located immediately in front of the vehicle and also to warn them of an impending accident. Whether you are pulling away or driving slowly (up to 15 km/h), the intelligent assistance system can detect potential collisions with unprotected road users.

## Attention Assist (AtAs)

Attention Assist (AtAs) is a safety assistance system that can help prevent microsleep. It thus contributes to improved driving safety, especially on long journeys and when driving at night. The system warns the driver visually and acoustically when it detects typical signs of overtiredness or inattention and prompts him/her to take a break. The warning is independent of the electronic logging device (ELD).

# Legal Notices

Some of the product information, illustrations and images contained in this Digital Offering may have been prepared for generic use on Daimler Buses Digital Offerings maintained in different countries around the world. Consequently, some of the information and/or accessories which are not available in some countries or which, in order to satisfy local market demand or regulatory controls in such countries, may only be available in different specifications or configurations. If you are interested in any vehicle model, paint, option or accessory shown on the Internet site and are unsure of its availability or specification in your locality, you should contact Daimler Buses and/or a local authorized dealer for the relevant product, for information of current details in your locality.

All prices specified are recommended retail prices. Prices are current at the time of publication and subject to change without notice.

Provider: Daimler Buses GmbH, Fasanenweg 10, 70771 Leinfelden-Echterdingen, Germany



and Mercedes-Benz are trademarks of Mercedes-Benz Group AG.



10/2025