



# THE TOURISMO.

Technical data and equipment at  
a glance.

Mercedes-Benz

The standard for buses.



# THE TOURISMO AT A GLANCE.

Tourismo L



|                      |        |              |       |
|----------------------|--------|--------------|-------|
| Length [mm]:         | 13,935 | Height [mm]: | 3,680 |
| Turning circle [mm]: | 23,327 | Width [mm]:  | 2,550 |

Tourismo M/3



|                      |        |              |       |
|----------------------|--------|--------------|-------|
| Length [mm]:         | 13,115 | Height [mm]: | 3,680 |
| Turning circle [mm]: | 21,428 | Width [mm]:  | 2,550 |

Tourismo M/2



|                      |        |              |       |
|----------------------|--------|--------------|-------|
| Length [mm]:         | 13,115 | Height [mm]: | 3,680 |
| Turning circle [mm]: | 23,774 | Width [mm]:  | 2,550 |

Tourismo



|                      |        |              |       |
|----------------------|--------|--------------|-------|
| Length [mm]:         | 12,295 | Height [mm]: | 3,680 |
| Turning circle [mm]: | 21,634 | Width [mm]:  | 2,550 |

# TECHNICAL DATA AND EQUIPMENT AT A GLANCE.

|   | Tourismo L | Tourismo M/3 | Tourismo M/2 | Tourismo |
|---|------------|--------------|--------------|----------|
| <b>Transport capacity</b>   |            |              |              |          |
| Number of seats – Standard seating                                      | 1/59       | 1/55         | 1/55         | 1/51     |
| Passenger capacity min.   | 48         | 44           | 44           | 44       |
| Passenger capacity max.   | 65         | 59           | 55           | 55       |
| Seating type Travel Star Eco (TSE)                                      | ●          | ●            | ●            | ●        |
| Seating type Travel Star Eco (TSE) Softline                             | ○          | ○            | ○            | ○        |
| Seating type Travel Star Eco (TSE) Luxline                              | ○          | ○            | ○            | ○        |
| Seating type Travel Star Xtra (TSX)                                     | ○          | ○            | ○            | ○        |
| Driver's seat GRAMMER Linea MSG 90.6 P, air-sprung                      | ●          | ●            | ●            | ●        |
| Driver's seat ISRI 6860, integrated pneumatic system, 3-point seat belt | ○          | ○            | ○            | ○        |
| Wheelchair space  | ○          | ○            | ○            | ○        |

|  | Tourismo L    | Tourismo M/3  | Tourismo M/2  | Tourismo      |
|--|---------------|---------------|---------------|---------------|
| Dimensions                                   |               |               |               |               |
| Length [mm]                                  | 13,935        | 13,115        | 13,115        | 12,295        |
| Length incl. mirrors [mm]                    | 14,296        | 13,476        | 13,476        | 12,656        |
| Width [mm]                                   | 2,550         | 2,550         | 2,550         | 2,550         |
| Height [mm]                                  | 3,680         | 3,680         | 3,680         | 3,680         |
| Inner stand height [mm]                      | 2,014         | 2,014         | 2,010         | 2,010         |
| Inner stand height central aisle [mm]        | 2,014         | 2,014         | 2,010         | 2,010         |
| Wheelbase front axle-drive axle [mm]         | 6,910         | 6,090         | 6,910         | 6,090         |
| Wheelbase drive axle - trailing axle [mm]    | 1,350         | 1,350         | -             | -             |
| Tyre size                                    | 295/80 R 22,5 | 295/80 R 22,5 | 295/80 R 22,5 | 295/80 R 22,5 |
| Overhang at front [mm]                       | 2,890         | 2,890         | 2,890         | 2,890         |
| Overhang at rear [mm]                        | 2,785         | 2,785         | 3,315         | 3,315         |
| Turning circle [mm]                          | 23,327        | 21,428        | 23,774        | 21,634        |
| Turning circle min. [mm]                     | 23,327        | 21,428        | 23,774        | 21,634        |
| Track circle minimal [mm]                    | 19,190        | 17,252        | 19,589        | 17,45         |
| Wheel impact front axle max. [°]             | 54            | 54            | 54            | 54            |
| Swing-out dimension [mm]                     | 1,126         | 1,186         | 649           | 719           |
| Usable volume / capacity AdBlue [l]          | 35 / 40       | 35 / 40       | 35 / 40       | 35 / 40       |
| Capacity fuel tank left / right [l]          | 260 / 220     | 260 / 220     | 260 / 220     | 260 / 220     |
| Luggage compartment volume [m³]              | 12.1          | 9.9           | 12.1          | 9.9           |
| Additional storage area volume [m³]          | 1.15          | 1.35          | 1.6           | 1.5           |
| Floor height central aisle over roadway [mm] | 1,370         | 1,370         | 1,370         | 1,370         |
| Pedestal height [mm]                         | 150           | 150           | 150           | 150           |
| Entry height door 1 [mm]                     | 355           | 355           | 355           | 355           |
| Entry height door 2 [mm]                     | 365           | 365           | 365           | 365           |

|                          |         |     |         |         |
|--------------------------|---------|-----|---------|---------|
| Clear door width 1 [mm]  | 770     | 770 | 770     | 770     |
| Clear door width 2 [mm]  | 590-650 | 900 | 590-650 | 590-650 |
| <b>Doors and glazing</b> |         |     |         |         |
| Number of doors          | 2       | 2   | 2       | 2       |
| Outward swiveling door   | ●       | ●   | ●       | ●       |
| Door position (A or B)   | A       | A   | A       | A       |
| Lift                     | ○       | ○   | ●       | ○       |
| Double glazed            | ●       | ●   | ●       | ●       |
| Windscreen heatable      | ○       | ○   | ○       | ○       |
| Windscreen Opticool      | ●       | ●   | ●       | ●       |

|                       | <b>Tourismo L</b>         | <b>Tourismo M/3</b>       | <b>Tourismo M/2</b>       | <b>Tourismo</b>           |
|-----------------------|---------------------------|---------------------------|---------------------------|---------------------------|
| <b>Transmission</b>   |                           |                           |                           |                           |
| Engine                | Mercedes-Benz OM 470      | Mercedes-Benz OM 470      | Mercedes-Benz OM 470      | Mercedes-Benz OM 470      |
| Engine 2*             | Mercedes-Benz OM 470      | Mercedes-Benz OM 470      | Mercedes-Benz OM 470      | Mercedes-Benz OM 470      |
| Engine 3*             | Mercedes-Benz OM 470      | Mercedes-Benz OM 470      | Mercedes-Benz OM 470      | Mercedes-Benz OM 470      |
| Engine 4*             | -                         | Mercedes-Benz OM 470      | Mercedes-Benz OM 470      | Mercedes-Benz OM 470      |
| Engine type           | 6-cylinder in-line-engine | 6-cylinder in-line-engine | 6-cylinder in-line-engine | 6-cylinder in-line-engine |
| Output [kW]           | 290                       | 290                       | 265                       | 265                       |
| Output 2* [kW]        | 315                       | 265                       | 290                       | 290                       |
| Output 3* [kW]        | 335                       | 315                       | 315                       | 315                       |
| Output 4* [kW]        | -                         | 335                       | 335                       | 335                       |
| Max. torque [Nm]      | 1,900                     | 1,700                     | 1,700                     | 1,700                     |
| Max. torque 2* [Nm]   | 2,100                     | 1,900                     | 1,900                     | 1,900                     |
| Max. torque 3* [Nm]   | 2,200                     | 2,100                     | 2,100                     | 2,100                     |
| Max. torque 4* [Nm]   | -                         | 2,200                     | 2,200                     | 2,200                     |
| At speed [1/min]      | 1,100                     | 1,100                     | 1,100                     | 1,100                     |
| At speed 2* [1/min]   | 1,100                     | 1,100                     | 1,100                     | 1,100                     |
| At speed 3* [1/min]   | 1,100                     | 1,100                     | 1,100                     | 1,100                     |
| At speed 4* [1/min]   | -                         | 1,100                     | 1,100                     | 1,100                     |
| Displacement [l]      | 10.7                      | 10.7                      | 10.7                      | 10.7                      |
| Displacement 2* [l]   | 10.7                      | 10.7                      | 10.7                      | 10.7                      |
| Displacement 3* [l]   | 10.7                      | 10.7                      | 10.7                      | 10.7                      |
| EU emissions standard | Euro VI E                 | Euro VI E                 | Euro VI E                 | Euro VI E                 |
| Transmission          | Mercedes-Benz GO 210-6    | Mercedes-Benz GO 210-6    | Mercedes-Benz GO 210-6    | MB GO 190-6               |
| Transmission 2*       | ZF Ecolife AP             | ZF Ecolife AP             | Mercedes-Benz GO 250-8    | Mercedes-Benz GO 210-6    |
| Transmission 3*       | Mercedes-Benz GO 250-8    | Mercedes-Benz GO 250-8    | ZF Ecolife AP             | Mercedes-Benz GO 250-8    |

|  |                                |                                |                                |                                |
|--|--------------------------------|--------------------------------|--------------------------------|--------------------------------|
| Transmission 4*  | -                              | Mercedes-Benz GO 230-6         | Mercedes-Benz GO 190-6         | ZF Ecolife AP                  |
| <b>Chassis</b>   |                                |                                |                                |                                |
| Steering   | ZF 8098 Servocom               | ZF 8098 Servocom               | ZF 8098 Servocom               | ZF 8098 Servocom               |
| Front axle, type   | ZF RL 82 EC                    | ZF RL 82 EC                    | ZF RL 82 EC                    | ZF RL 82 EC                    |
| Driven axle, type  | Mercedes-Benz RO 440           | Mercedes-Benz RO 440           | Mercedes-Benz RO 440           | Mercedes-Benz RO 440           |
| Front axle: independent suspension, anti-roll bar        | ●                              | ●                              | ●                              | ●                              |
| Drive axle: with anti-roll bar                           | ●                              | ●                              | ●                              | ●                              |
| Trailing axle: active steering, independent suspension   | ●                              | ●                              | -                              | -                              |
| Raising/Lowering system                                  | ●                              | ●                              | ●                              | ●                              |
| Kneeling   | ○                              | ○                              | ○                              | ○                              |
| Air suspension via electronic level control system (ENR) | ●                              | ●                              | ●                              | ●                              |
| <b>Brakes</b>  |                                |                                |                                |                                |
| Pneumatic disc brakes on all axles                       | ●                              | ●                              | ●                              | ●                              |
| Electronic Stability Programme (ESP®)                    | ●                              | ●                              | ●                              | ●                              |
| Electronically controlled braking system (EBS)           | ●                              | ●                              | ●                              | ●                              |
| Anti-blocking system (ABS)                               | ●                              | ●                              | ●                              | ●                              |
| Brake Assist (BAS)                                       | ●                              | ●                              | ●                              | ●                              |
| Acceleration Slip Regulation (ASR)                       | ●                              | ●                              | ●                              | ●                              |
| Retarder limiter (RL)                                    | ●                              | ●                              | ●                              | ●                              |
| Retarder   | Secondary water retarder (SWR) | Secondary Water Retarder (SWR) | Secondary Water Retarder (SWR) | Secondary Water Retarder (SWR) |
| Automatic bus stop brake with pull-away lock             | ○                              | ○                              | ○                              | ○                              |
| Parking brake  | ●                              | ●                              | ●                              | ●                              |

|  | Tourismo L | Tourismo M/3 | Tourismo M/2 | Tourismo |
|--|------------|--------------|--------------|----------|
| <b>Safety and driver assistance systems</b>          |            |              |              |          |
| Rollover strength compliant with in ECE R29          | ●          | ●            | ●            | ●        |
| Adaptive Cruise Control (ART)                        | ○          | ○            | ○            | ○        |
| Lane Assist (SPA)                                    | ●          | ●            | ●            | ●        |
| Attention Assist (AtAs)                              | ●          | ●            | ●            | ●        |
| Tire Pressure Monitoring (TPM)                       | ●          | ●            | ●            | ●        |
| Active Brake Assist 6 (ABA 6)                        | ●          | ●            | ●            | ●        |
| Front Collision Guard (FCG)                          | ●          | ●            | ●            | ●        |
| Sideguard Assist 2                                   | ●          | ●            | ●            | ●        |
| Frontguard Assist                                    | ●          | ●            | ●            | ●        |
| Traffic Sign Assist                                  | ●          | ●            | ●            | ●        |
| Electronic Stability Program (ESP®)                  | ●          | ●            | ●            | ●        |
| MirrorCam  | ○          | ○            | ○            | ○        |
| Reversing camera                                     | ●          | ●            | ●            | ●        |
| Reversing buzzer                                     | ○          | ○            | ○            | ○        |
| Extinguishing system                                 | ●          | ●            | ●            | ●        |
| Rain-light sensor                                    | ●          | ●            | ●            | ●        |
| Flat wiper blades with water fed through wiper blade | ●          | ●            | ●            | ●        |
| Rollover strength compliant with ECE-R 66.02         | ●          | ●            | ●            | ●        |

|  | Tourismo L | Tourismo M/3 | Tourismo M/2 | Tourismo |
|--|------------|--------------|--------------|----------|
| <b>Weight and fuel tanks</b>                     |            |              |              |          |
| Capacity of fuel tank [l]                        | 480        | 480          | 480          | 480      |
| AdBlue® additive tank [l]                        | 40         | 40           | 40           | 40       |
| Gross vehicle weight [kg]                        | 24,750     | 24,750       | 19,500       | 19,500   |
| Axle loads, max. permissible front axle [kg]     | 7,500      | 7,500        | 7,500        | 7,500    |
| Axle loads, max. permissible drive axle [kg]     | 12,600     | 12,600       | 12,600       | 12,600   |
| Permissible weight trailing axle [kg]            | 5,750      | 5,750        | -            | -        |
| <b>Heating, air conditioning and ventilation</b> |            |              |              |          |
| Heater with convectors at side walls             | ●          | ●            | ●            | ●        |
| Driver's area air conditioning                   | ●          | ●            | ●            | ●        |
| EvoCool Basic                                    | ●          | ●            | ●            | ●        |
| EvoCool Comfort                                  | ○          | ○            | ○            | ○        |
| EvoCool ComfortPlus                              | ○          | ○            | ○            | ○        |
| Cooling capacity passenger compartment [hp/kW]   | 39         | 35           | 32           | 32       |
| Driver's area air conditioning [hp/kW]           | 8          | 8            | 8            | 8        |
| Heating power passenger compartment [hp/kW]      | 39         | 39           | 36           | 36       |
| Heating power driver's seat [hp/kW]              | 16         | 16           | 18           | 18       |
| Refrigerant filling capacity [lbs/kg]            | 7.5        | 7.5          | 6.5          | 6.5      |
| CO <sub>2</sub> equivalent [lbs/t]               | 10.725     | 10.725       | 9.295        | 13.585   |
| <b>Profitability</b>                             |            |              |              |          |
| Predictive Powertrain Control (PPC)              | ○          | ○            | ○            | ○        |
| Tire Pressure Monitoring (TPM)                   | ○          | ○            | ○            | ○        |
| Air resistance                                   | 0.33       | 0.33         | 0.33         | 0.33     |

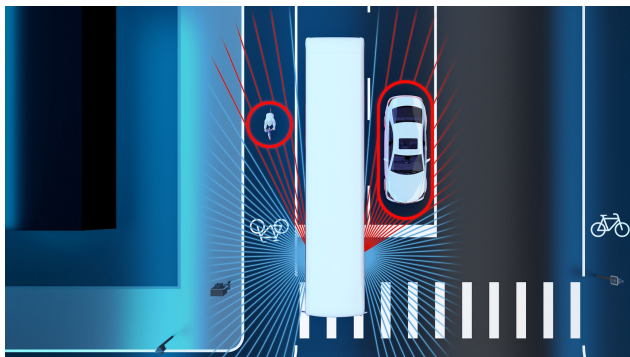
|  | Tourismo L | Tourismo M/3 | Tourismo M/2 | Tourismo |
|--|------------|--------------|--------------|----------|
| <b>Lighting</b>                            |            |              |              |          |
| Low beam                                   | ●          | ●            | ●            | ●        |
| High beam                                  | ●          | ●            | ●            | ●        |
| Daytime driving lights with LED technology | ○          | ○            | ○            | ○        |
| Daytime driving lights with halogen        | ●          | ●            | ●            | ●        |
| Headlamps Bi-Xenon incl. cleaning system   | ○          | ○            | ○            | ○        |
| Front fog lamp                             | ●          | ●            | ●            | ●        |
| Entrance lighting                          | ●          | ●            | ●            | ●        |
| Cornering light                            | ○          | ○            | ○            | ○        |
| Position lights                            | ●          | ●            | ●            | ●        |
| Ambient lighting luggage compartment       | ○          | ○            | ○            | ○        |
| Ambient lighting for reverse driving       | ○          | ○            | ○            | ○        |
| Ambient lighting for lift                  | ○          | ○            | ○            | ○        |

● Standard equipment ○ Optional equipment

\* Optional equipment

# SAFETY.

## Sideguard Assist 2



Sideguard Assist 2 is a safety assistance system that supports the driver in critical situations when turning right or turning left when visibility is possibly restricted. The system is designed to help detect moving obstacles within the system limits, and warns the driver so as to avoid critical situations or reduce the consequences of accidents when turning off or changing lanes.

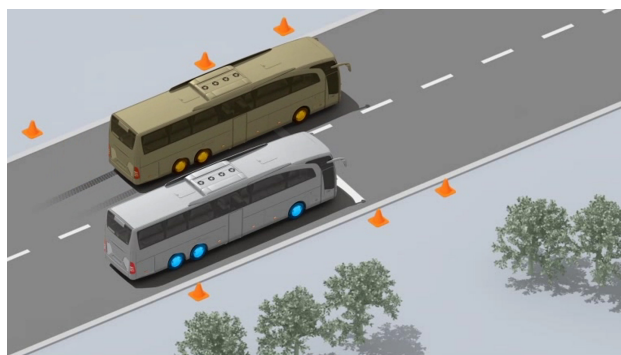
## Electronic Stability Program (ESP®)

The Electronic Stability Program significantly reduces the risk of skidding by selectively braking individual wheels, thus preventing loss of control of the vehicle in curves and emergency steering manoeuvres.

## Rain-light sensor

The rain sensor and automatic driving light are assist systems that activate automated functions by means of a sensor system and relieve the driver of routine tasks.

## Electronic Braking Assist (BAS)



By constantly comparing the data, the electronic braking assist system immediately detects if the speed at which the brake pedal is pressed suddenly exceeds the usual level, and in such situations automatically boosts the maximum braking power to within fractions of a second. This significantly shortens the stopping distance of the vehicle.

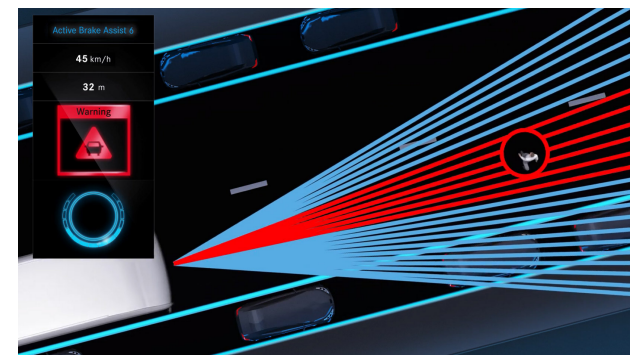
## AquaBlade® windscreen wipers

The AquaBlade® windscreen wipers ensure optimum visibility at all times and, thanks to an ergonomic design, minimise both driving noise and fuel consumption.

## Acceleration Skid Control (ASR)

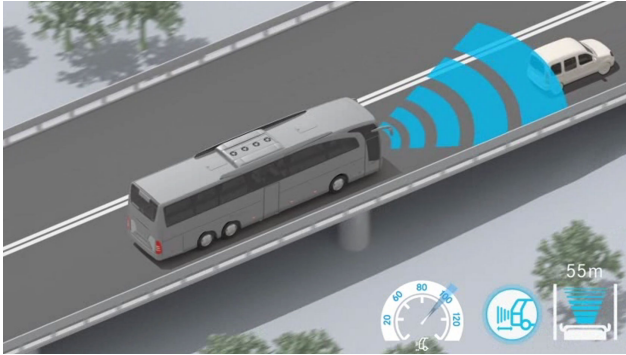
ASR prevents the drive wheels from spinning in two ways. On the one hand, ASR minimises wheel spinning through a measured braking intervention. On the other hand, the torque of the engine is regulated via the "electronic accelerator pedal".

## Active Brake Assist 6



The emergency braking system ABA 6 assists the driver by automatically initiating emergency braking if there is a risk of rear-impact collision with vehicles in front or stationary obstacles. It also detects moving or stationary persons and cyclists in front of the vehicle. The system reacts to this with an acoustic and visual warning to the driver as well as an automatically initiated partial braking or emergency braking.

## Intelligent adaptive cruise control



The Adaptive Cruise Control feature (ACC) relieves the driver by maintaining a constant distance – defined by the driver – from the vehicle ahead, based on continuous measurements. This not only increases safety on country roads and motorways, but also convenience.

## Front Collision Guard (FCG)



The unique Front Collision Guard (FCG) safety system protects the driver and passengers with state-of-the-art, patented technology – uncompromisingly reliable in head-on collisions.

## Lane Assist (SPA)



Lane Assist (SPA) detects when the vehicle unintentionally leaves a marked lane. If it crosses the markings, the driver is warned by a clear vibration through the driver's seat.

## Tyre Pressure Monitoring (TPM)

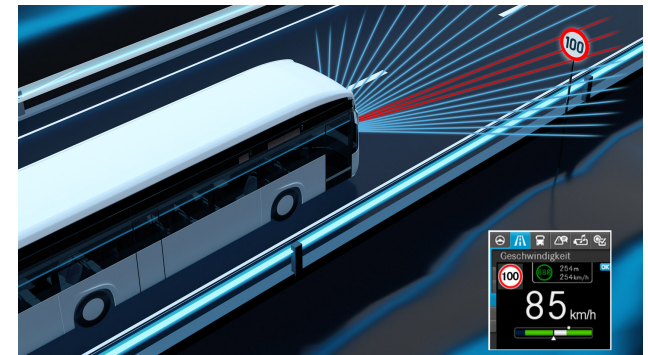


Tyre Pressure Monitoring (TPM) displays the current pressure in the individual tyres and warns of deviations from the optimum pressure. This reduces tyre wear, has a positive effect on fuel consumption and prevents dangerous tyre damage.

## MirrorCam

The modern MirrorCam system provides a clear and full view of the road traffic. Equipped with high-resolution cameras, the driving safety is improved and the risk of accidents is minimised. The extended field of vision enables the driver to see pedestrians, cyclists and other road users in the surrounding area. This eliminates the blind spot when turning right.

## Traffic Sign Assist (TSA)



The innovative Traffic Sign Assist offers maximum safety and comfort on the road. Thanks to GPS and camera support, the vehicle speed is constantly compared with the current traffic regulations.

## Frontguard Assist

Frontguard Assist is an advanced system that was specially developed to warn drivers of pedestrians located immediately in front of the vehicle and also to warn them of an impending accident.

Whether you are pulling away or driving slowly (up to 9.3 mph), the intelligent assistance system can detect potential collisions with unprotected road users.

# LEGAL NOTICES

Some of the product information, illustrations and images contained in this Digital Offering may have been prepared for generic use on Daimler Buses Digital Offerings maintained in different countries around the world. Consequently, some of the information and/or accessories which are not available in some countries or which, in order to satisfy local market demand or regulatory controls in such countries, may only be available in different specifications or configurations. If you are interested in any vehicle model, paint, option or accessory shown on the Internet site and are unsure of its availability or specification in your locality, you should contact Daimler Buses and/or a local authorised dealer for the relevant product, for information of current details in your locality.

All prices specified are recommended retail prices. Prices are current at the time of publication and subject to change without notice.

Provider: Daimler Buses GmbH, Fasanenweg 10, 70771 Leinfelden-Echterdingen, Germany



and Mercedes-Benz are trademarks of Mercedes-Benz Group AG



10/2025